

Installation instructions





LORO-RAINSTAR® scupper drains with clamping flange, without upstand

for roof sealing sheets of bitumen or plastic, in accordance with EN 1253, made of stainless steel

LORO-RAINSTAR® scupper drains without upstand consist of the drain body and the strainer (for gravity flow) or the cover (for pressure flow).

System overview

LORO-RAINSTAR® scupper rain water drainage

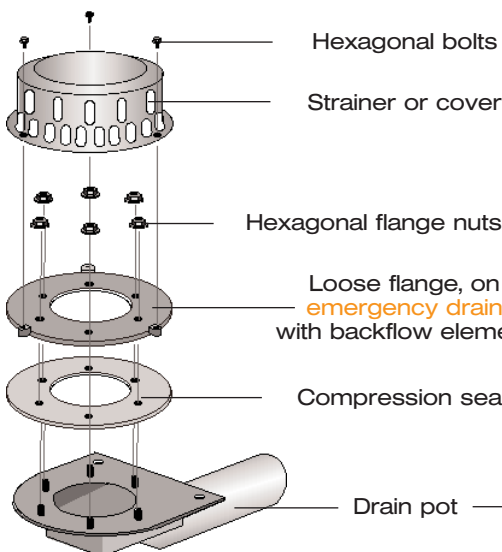
	Gravity flow		Pressure flow	
	Main drain	Emergency drain	Main drain	Emergency drain
with clamping flange for bituminous and plastic sealing sheets				
DN 40			01392.040X	01393.040X
DN 50	01390.050X	01391.050X	01392.050X	01393.050X
DN 70	01390.070X	01391.070X	01392.070X	01393.070X
DN 100	01390.100X	01391.100X	01392.100X	01393.100X

Trace heating

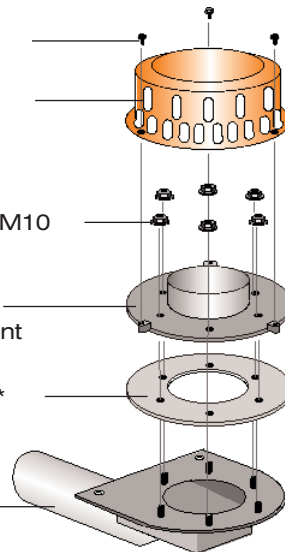
After checking the roof drains and pipes in areas endangered by frost, we recommend that customers install trace heating if necessary.

Construction diagram

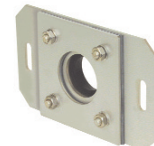
Main drainage system



Emergency drainage system



LORO sliding flange for bonding the vapour barrier of bitumen or plastic



13232.040X*

* incl. compression seals and sealing element 00914.050X

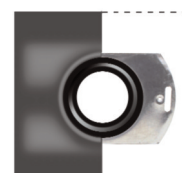


13232.050X*

* incl. compression seals and sealing element 00911.050X

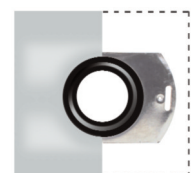
LORO sliding flange for bonding the vapour barrier

of bitumen



13235.070X*
13235.100X

of plastic

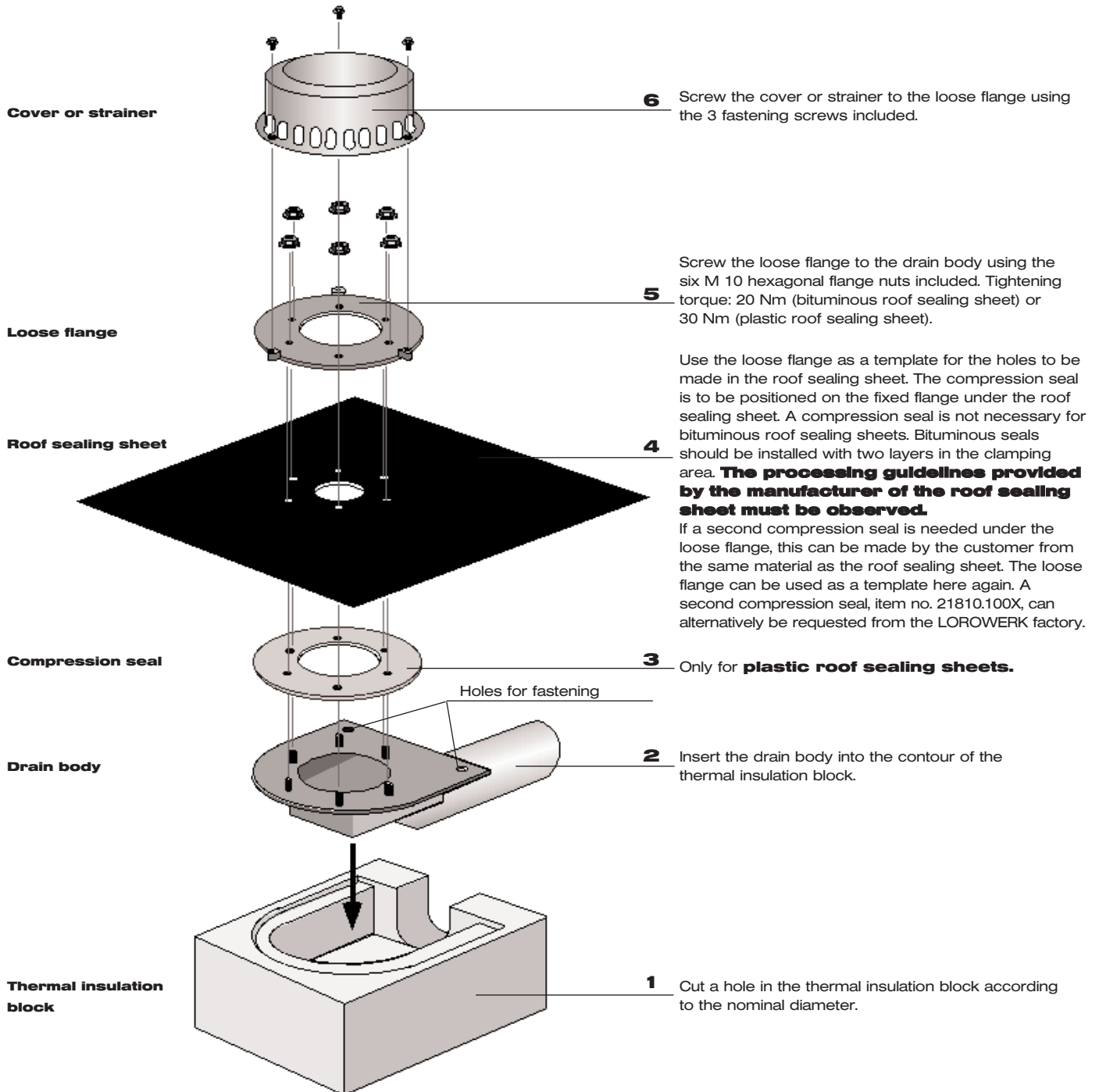


13236.070X*
13236.100X

* DN 70, including sealing element

* Can be omitted with bituminous roof sealing sheets.

These installation instructions also apply to the flat roof emergency drains!



LOROWERK K.H.Vahlbrauk GmbH & Co.KG

Kriegerweg 1, 37581 Bad Gandersheim, Tel.: +49(0)53 82.710, Fax: +49(0)53 82.712 03
 Web: www.loro.de, e-mail: infocenter@lorowerk.de

Technical status: March 2011.
 Subject to technical changes.