

# Direct-Drains with connecting collar, made of steel or copper DN 70 and DN 100, Series H

**Range of application : Balconies/Terraces with sealing sheet, concrete slabs or cladding**

## Description:

### Series H, single-part unit

LORO balcony direct-drains with connecting collar (according to DIN EN 1253), made of hot-dip galvanised steel, with additional coating.

Alternatively : made of copper

With vertical / horizontal socket  
With / without thermal insulation

Single-part unit, consisting of :

Base unit, connecting collar, clamping ring, drain ring, square-shaped retainer (150 x 150mm for build-up height 35 – 155mm), stainless steel strainer (143 x 143mm), DN 70 and DN 100

### Series H, two-part unit

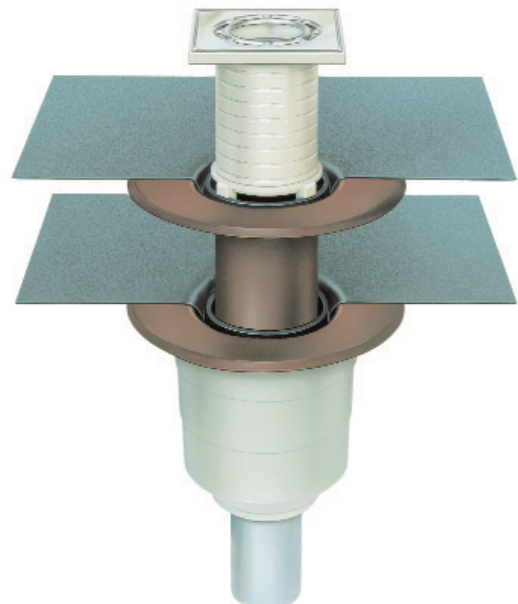
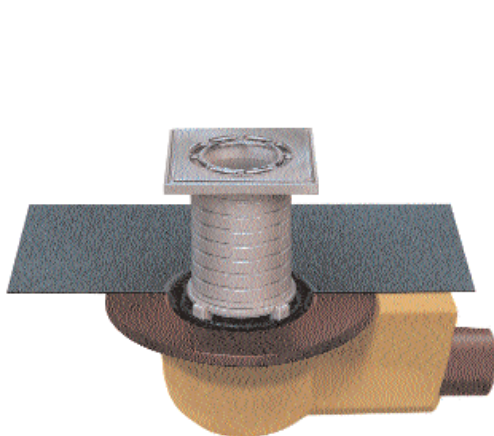
LORO balcony drains with connecting collar (according to DIN EN 1253), made of hot-dip galvanised steel, with additional coating.

Alternatively : made of copper

With vertical / horizontal socket  
With / without thermal insulation

consisting of :

Base unit, connecting collar, clamping ring, sealing element, extension cartridge (build-up height 60...120mm), two part unit, connecting collar, clamping ring, drain ring, square-shaped retainer (150 x 150mm for build-up height 35 – 155mm), stainless steel strainer (143 x 143mm), DN 70 and DN 100



Series H